

TECHNICAL SPECIFICATIONS

GENERAL

Frequency Response	0.05 to 150 Hz
Acquisition	Simultaneous 12 lead acq.
ADC	16 Bit
Notch Filter (Digital Filter)	50 / 60 Hz
Sampling Rate	4500 samples / sec
Rejection Ratio (CMRR)	> 100 db
DF Protection	GDTs (Gas discharge tubes)
Patient Leakage	< 10 micro Amp
Input Impedance	> 100 M Ohms

DISPLAY SETTING

Display Resolution	Auto adjustable as per display settings
ECG Display Format	3 lead+12 median, 6lead+12 median, 12-lead+12 medians
Display Sensitivities	5, 10, 20 mm/mV
Display Sweep Speed	25, 50 mm / sec
Muscle Filter	35, none
Base Line Correction	Excellent base line stability
Test Protocols	Bruce, Modified Bruce, Balke, Ellested, Naughton, and user definable protocols
Operating System	Win XP

TREAD MILL

Power Input	230V / 15 Amp / 50 Hz or 110 V / 15 Amp / 60 Hz
Speed	0.8 to 16 Kmph
Grade	0 to 22% (can be increased upto 25%)
Walking Area	1500 mm x 500 mm
Dimensions	2000 mm x 700 mm
Max. Load	upto 200 Kg
Net Weight	180 Kg (Approximately)
Control	Optically / Digitally isolated USB

Allengers Series of CARDIO Products

- Pulse Oximeter : LIBRA - OXYPLUS
- Multipara Patient Monitor : LIBRA - A - 105
- Single Channel and Six Channel Portable ECG : PISCES-A-101 and A-106
- Central Monitoring System: LIBRA-CMS

MARKETED BY:

ALLENTERS MEDICAL SYSTEMS LTD.

S.C.O. 212-213-214, SECTOR 34-A, CHANDIGARH -U.T. 160 022 (INDIA) www.allengers.com

DOMESTIC SALES :

Ph : +91 172 3012280-84
Fax : +91 172 2621913
sales@allengers.net

INTERNATIONAL SALES :

Ph : +91 172 3012285, 3012287
Fax : +91 172 2621912
exports@allengers.net

EUROPEAN REPRESENTATIVE :

JMC Medical Sprl (Mr. Jean Marc Claeys)
58, Avenue du Parc de Woluwe, B-1160 Bruxelles, Belgium
Tel. : 00/32.2.672.56.44 Fax : 00/32.3.662.29.92 E-mail : jmc@beon.be

MANUFACTURED BY : ALLENTERS GLOBAL HEALTHCARE (P) LTD.

TOLL FREE NO. 1800-266-8800 (INDIA)

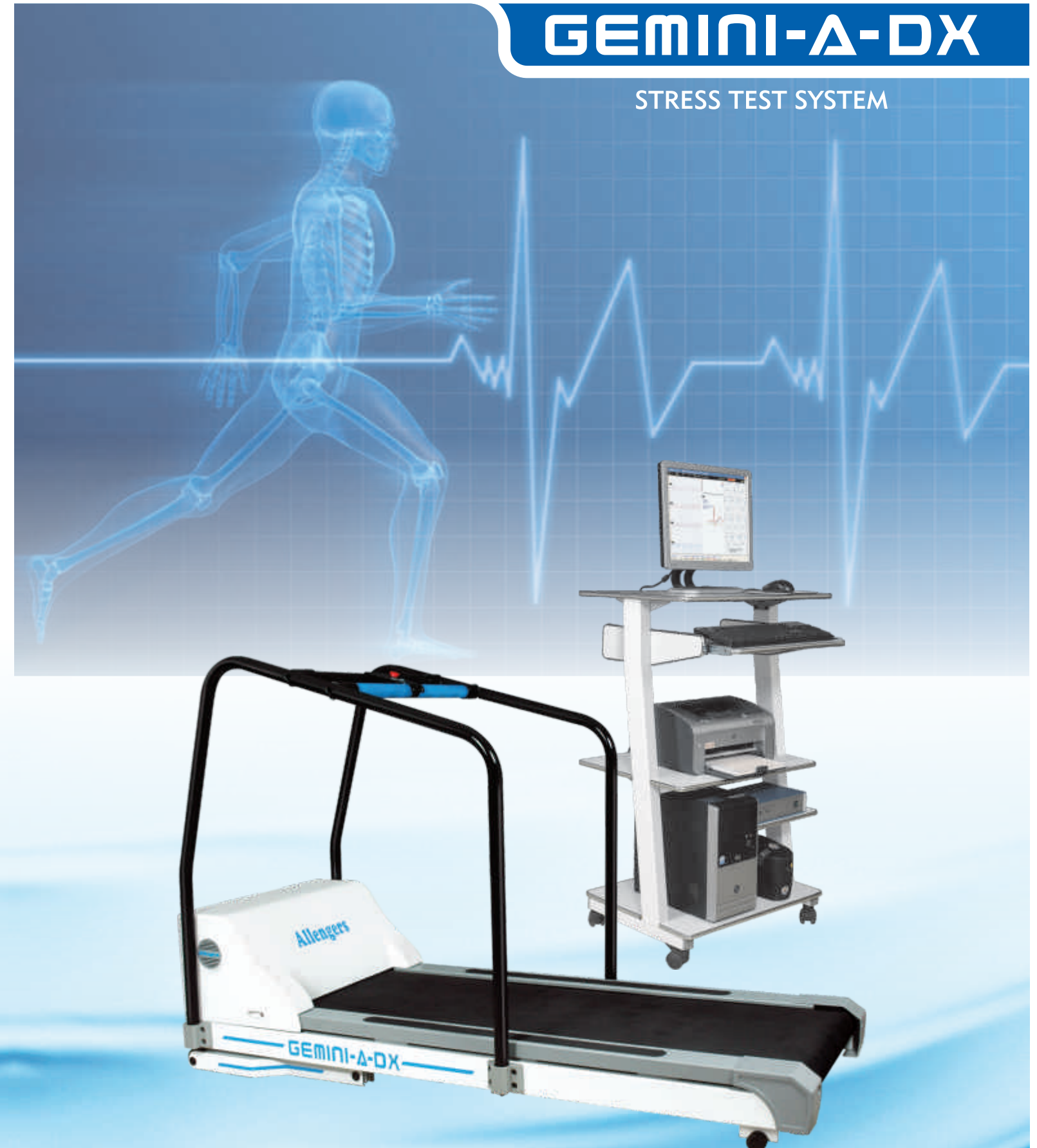
For detailed technical specifications, please refer to the respective product data sheets / quotation.
Due to continuous product improvements, specifications and appearance are subject to change without prior notice.

Allengers

Passion for excellence

GEMINI-A-DX

STRESS TEST SYSTEM





TREAD MILL TEST (TMT)

Allengers' Gemini Series of stress test systems are designed using state-of-the-art technology and more than 20 years experience in design and manufacturing of medical equipments. Sturdy, in house designed treadmill and stable base line during stress test are highlights of Allengers' TMT.

User friendly operation and patient safety are in-corporated in design. USB interface enables the equipment to be used with any desktop / laptop computer. Light weight, small body level acquisition removes the artifacts due to patient motion using small lead lengths (optional feature).

"Emergency Stop" is provided to stop treadmill motion in case of emergency.

SALIENT FEATURES

- Duke score interpretation
- Bandwidth 0.05 - 150 Hz
- USB 2.0 ready
- Editable protocols
- Online printing
- Strong analysis tools with different display types
- PVC detection
- RR analysis
- ECG add on
- Activity log

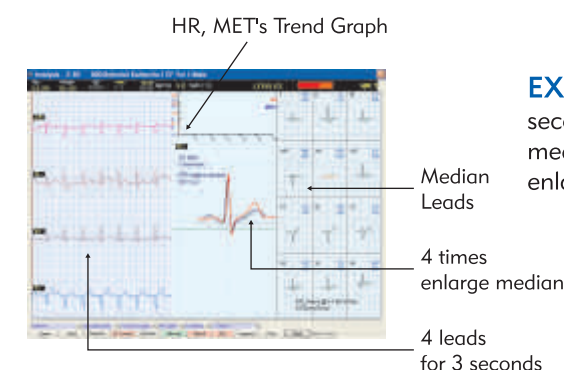
UP-GRADABLE TO

- Wireless
- Automated NIBP with motion tolerance technology



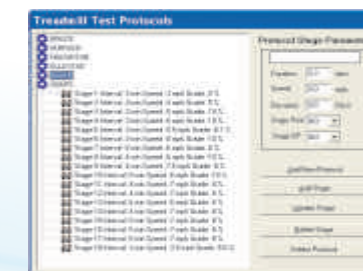
SCREEN SHOTS GALLERY

TOTAL DISCLOSURE : Displays a complete test record for single test. Lead is selectable from all 12 leads. Zooming of particular lead and navigating to test from selectable position is possible at one click.



EXERCISE MODE DISPLAY : This format shows 4 leads for 04 seconds with HR/METs Trends, one enlarged median and all 12 medians with respective ST Levels and ST Slopes. Comparison of enlarged median and adjusting of cursors is also present.

EXERCISE PROTOCOLS : Treadmill test protocol for treadmill showing each stage elevation, speed, duration. Allows new protocol to be added. Editing and deletion of user made protocol is also available. Standard protocols like Bruce, Modified Bruce, Naughton, Balke and Ellested are provided.



DUKE TREADMILL SCORE : Our advanced software predicts the probability of (CAD) in patient at end of exercise test.

AUTOMATED B.P. MEASUREMENT : Facility to take automated blood pressure measurements at defined intervals without manual intervention through bi-directional communication with stress system. This saves valuable time any yields accurate B.P. measurements during motion.